

# PHILADELPHIA'S MURALS

Philadelphia is famous for its many, many murals. The mural below is painted on the John Gloucester House in the Point Breeze section of the city. It was painted four years ago in the year 2000 by an artist named Kathleen Ogilvie and it is called:

## ***"THE COLORS OF POINT BREEZE"***



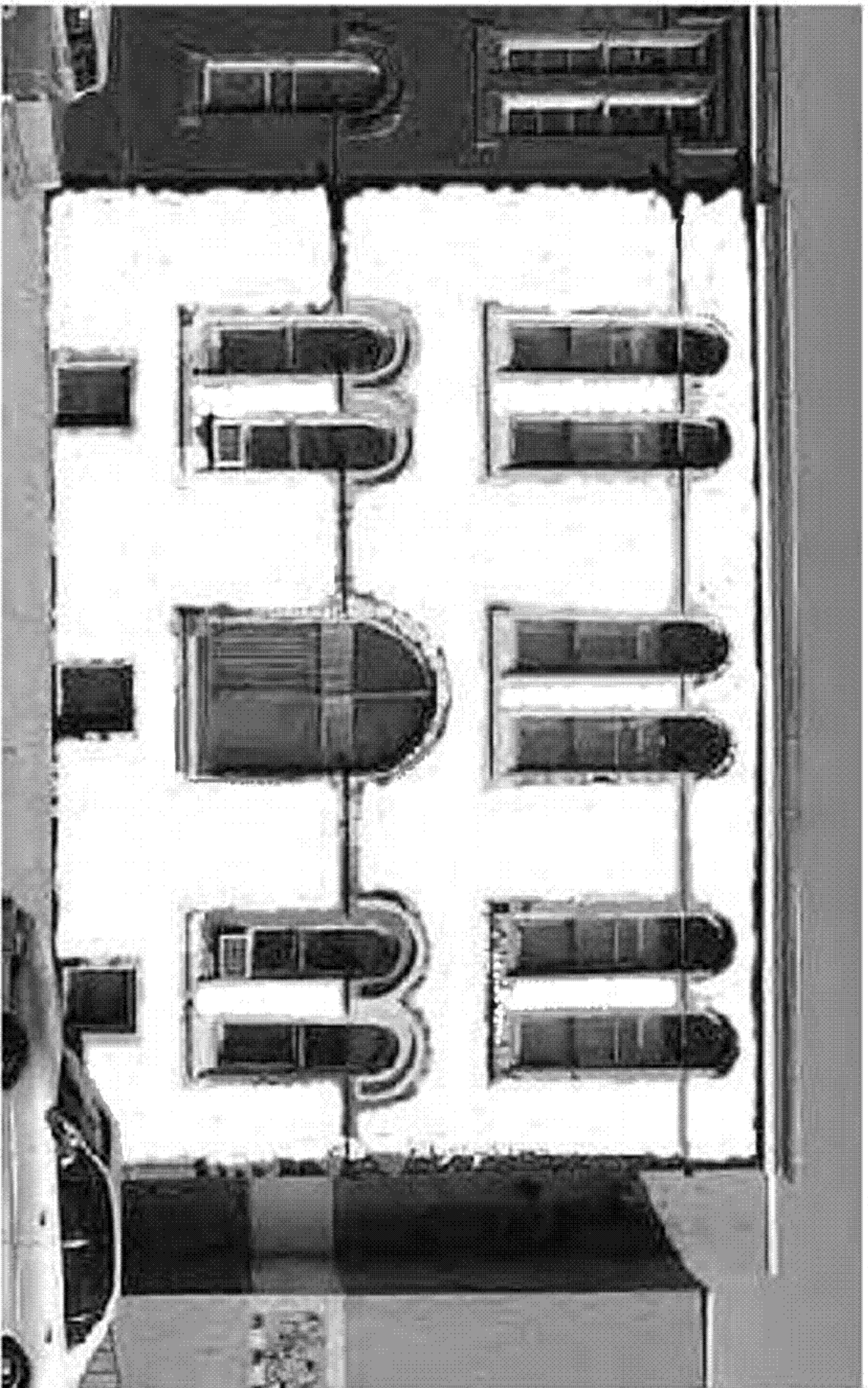
Find ten things that have changed in the mural below.



# WHAT THE JGH MURAL WOULD LOOK LIKE IF I HAD PAINTED IT

Design a mural for John Gloucester House's mural wall. Use colored pencils or markers and make a mural design on the blank wall below. Send in your mural to be published in the next issue of

**HIP, HIP HOORAY**

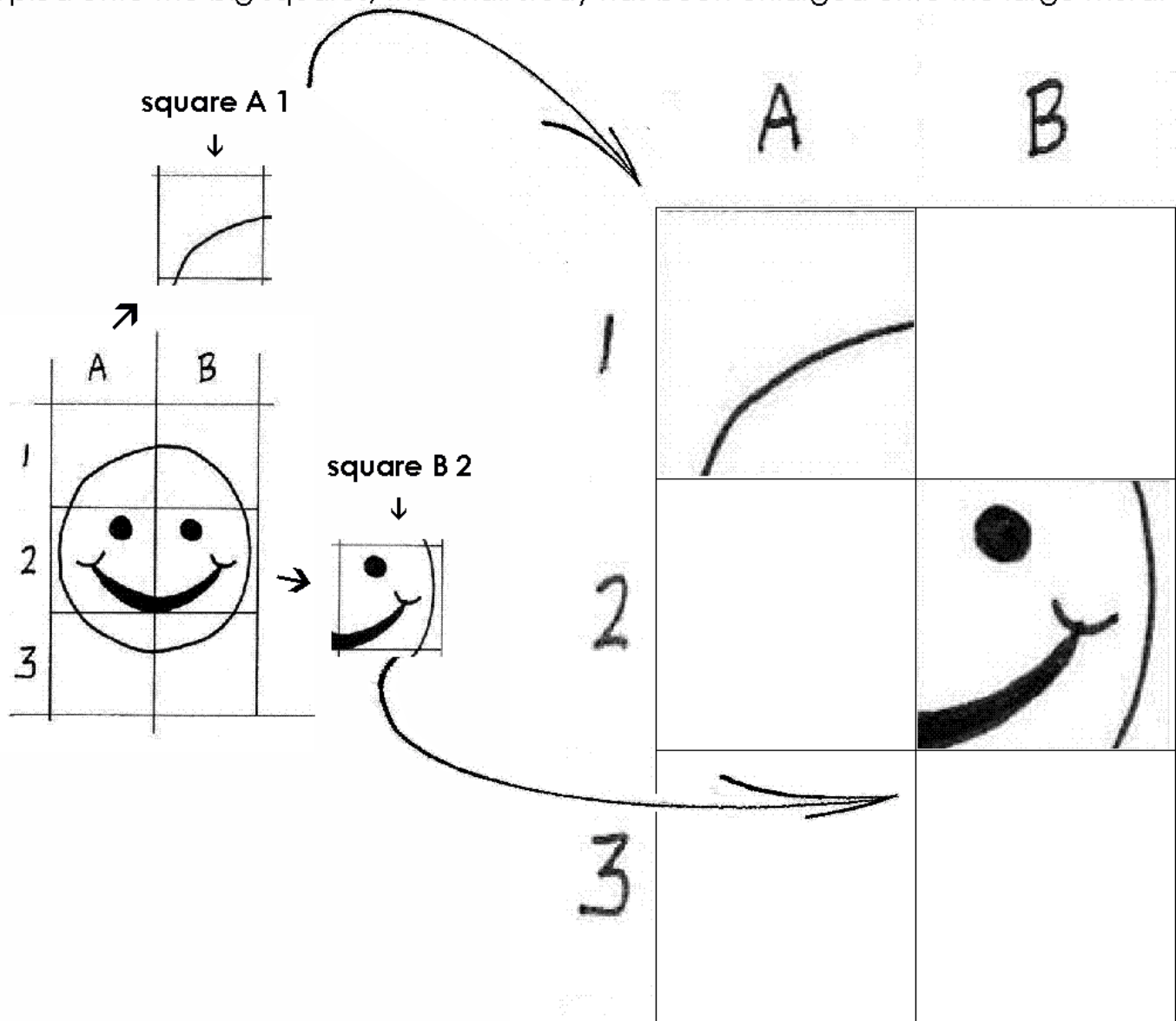


# MURAL MAKING: HOW TO ENLARGE

There is a lot of work that goes into making a mural before any paint gets put on the walls. Mural artists make many small plans of their mural painting called studies. Once they pick the design they want, how do you think they get that small final study onto a huge building wall? How do the artists **enlarge** their small final study?

## One way of enlarging uses grids.

The artist puts the final study onto a grid. A much larger grid is put on the mural wall. The grids are numbered as shown. Each square has its own name. It is not too hard to copy what is one of the small squares onto one of the big squares. Once all the small squares get copied onto the big squares, the small study has been enlarged onto the large mural wall.



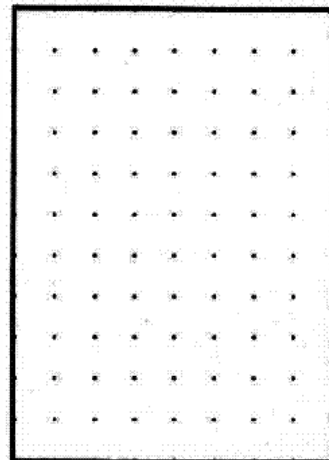
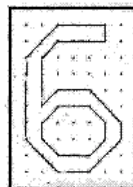
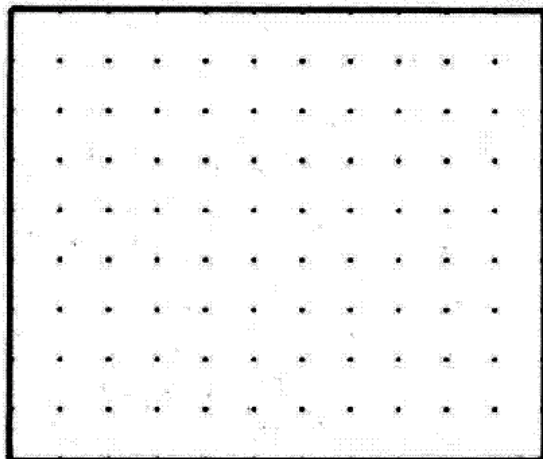
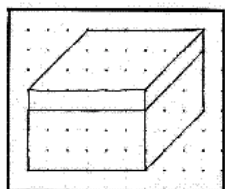
Once all the squares are copied onto the large grid, the small drawing will have a bigger version of itself.

3 On the next page try and make your own enlargements. Send in your drawings in to be published in the next issue of **HIP, HIP HOORAY.**

# MAKE YOUR OWN ENLARGEMENT

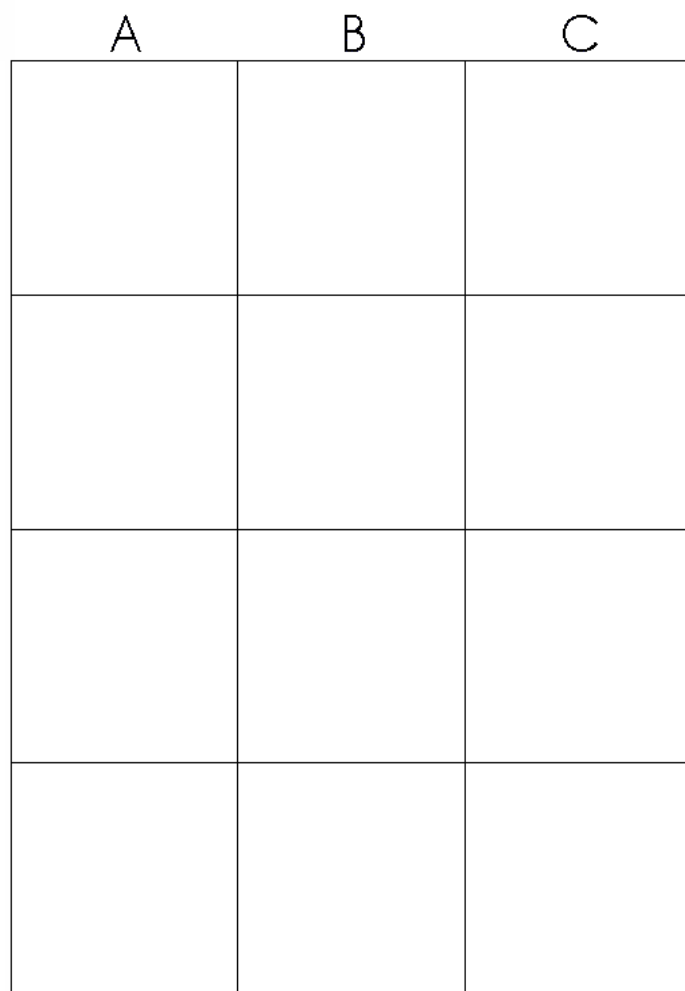
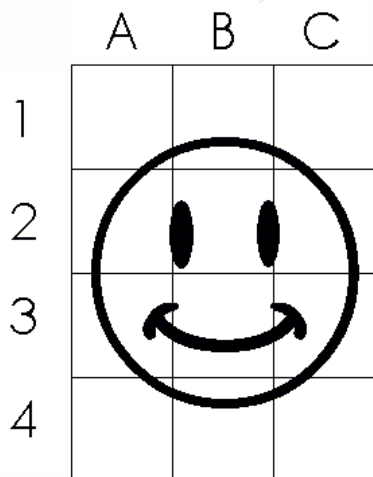
An easy way to start enlarging is by using a grid of dots instead of squares. Start with a dot grid enlargement. Then try to enlarge using the square grid. Try enlarging your own drawings.

**Can you make the small dot-picture big?** The larger, empty dot grid is exactly the same as the smaller grid with the dot-picture, except larger. Connect the dots in the larger grid exactly like they are connected in the smaller grid. You will get a bigger copy of the dot-picture.



NOW TRY THE SQUARE GRID:

Enlarge the smiley face onto the larger grid.



# MAKE YOUR OWN ENLARGEMENT

Try enlarging a drawing of your own. Draw a **SIMPLE** design on the small grid on the right and see if you can make it big on the grid below!

Send in your small and large drawings in to be published in the next issue of **HIP, HIP HOORAY!**

	A	B	C	D	E
1					
2					
3					
4					
5					

	A	B	C	D	E
1					
2					
3					
4					
5					